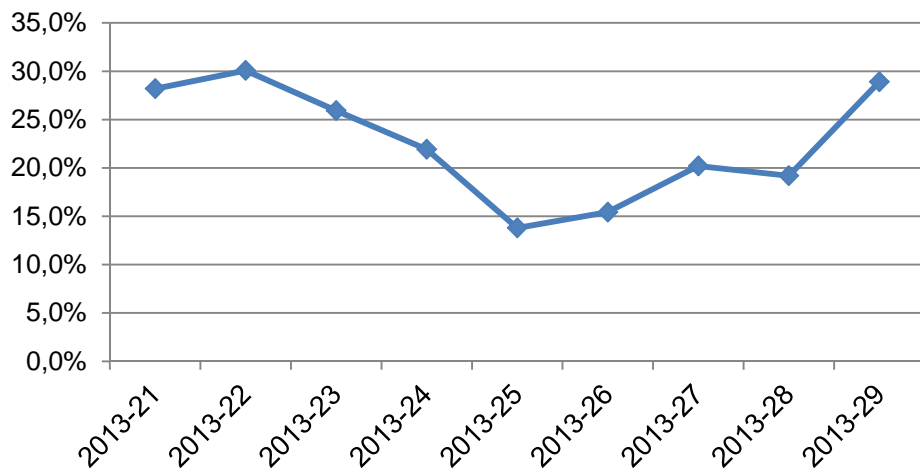


Asistencia APVs semana 29

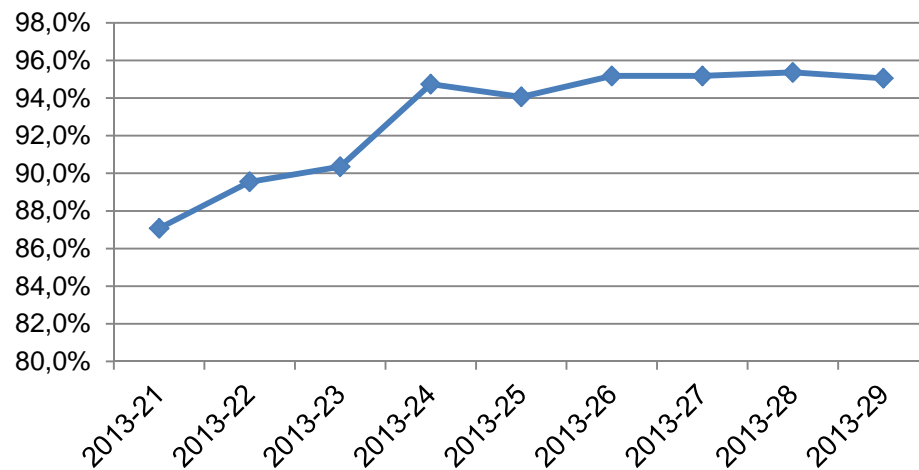
SITE	SUCURSAL	% Productividad	% Ausentismo	% Completitud	Por Contratar	
					SEM 29	SEM 28
1001	SAN MARTIN	59.5%	26%	86%	2.0	3.6
1002	ARTIGAS	68.4%	21%	91%	1.1	2.0
1003	EL VALLE	61.5%	4%	72%	4.4	4.4
1004	EL PARAISO	48.8%	30%	77%	3.0	1.3
1005	CC PROPATRIA	74.4%	6%	83%	2.0	2.0
1007	EL MARQUES	87.1%	13%	100%	-	-
1008	ANTIMANO	4.1%	94%	75%	3.0	3.0
1009	ANDRES BELLO	69.8%	30%	113%	-2.0	-2.0
1010	GUATIRE	55.2%	47%	103%	-0.3	-0.9
1011	GUARENAS	102.5%	10%	110%	-1.0	-1.0
1012	PROPATRIA II	79.5%	16%	102%	-0.3	-0.6
1013	GATO NEGRO	46.2%	40%	85%	2.0	2.0
1014	PARQUE CARACAS	135.8%	1%	122%	-2.0	-3.1
1015	MAIQUETIA	49.0%	51%	100%	-	-0.4
1020	CAPITOLIO	61.3%	40%	101%	-0.1	0.1
1025	LA VEGA	29.9%	70%	111%	-1.0	-1.0
1029	CARICUAO	63.2%	35%	98%	0.1	1.0
1031	AGUA SALUD	72.7%	37%	111%	-1.0	-1.7
1040	MAIQUETIA II	80.3%	8%	90%	1.4	2.0
Total general		64.5%	29%	95%	0.6	0.6

Evolución Semanal APV

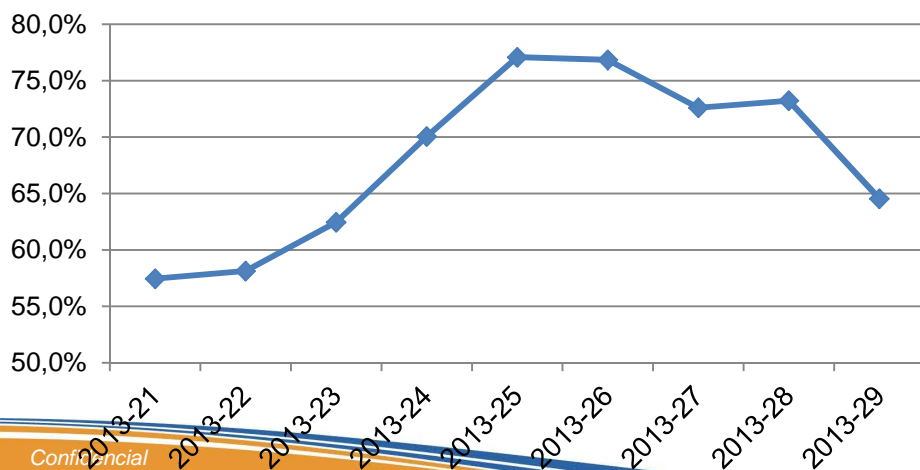
Ausentismo



Compleitud



Productividad



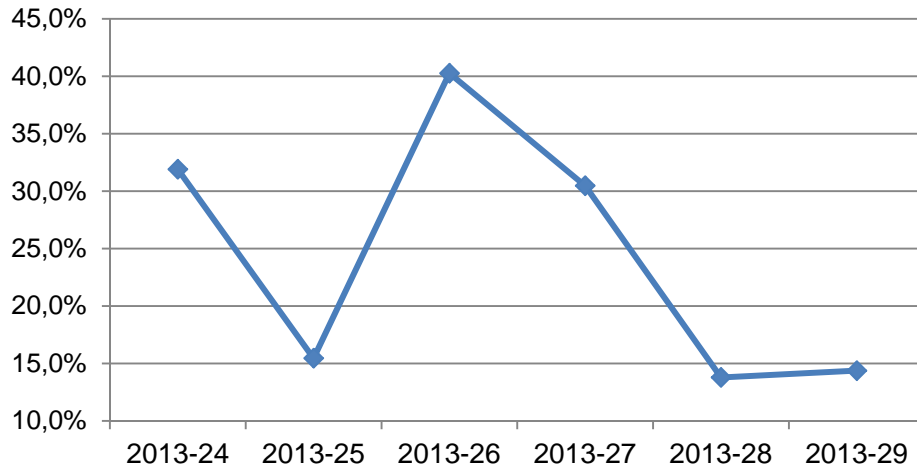
Semana	Ausentismo	Compleitud	Productividad
2013-21	28.2%	87.1%	57.4%
2013-22	30.1%	89.5%	58.1%
2013-23	25.9%	90.4%	62.5%
2013-24	21.9%	94.7%	70.1%
2013-25	13.8%	94.1%	77.1%
2013-26	15.4%	95.2%	76.8%
2013-27	20.2%	95.2%	72.6%
2013-28	19.2%	95.4%	73.2%
2013-29	28.9%	95.1%	64.5%

Asistencia Centro de Distribución

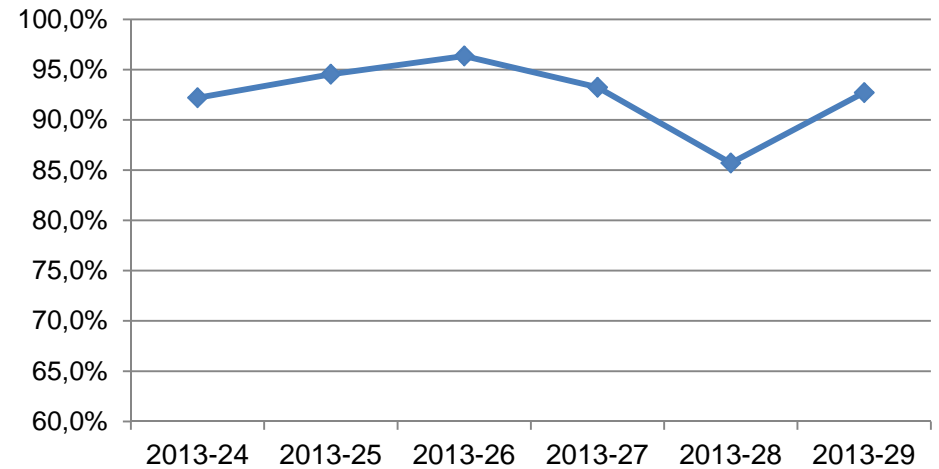
Valores	2013-25	2013-26	2013-27	2013-28	2013-29	Total general
% Productividad	78.2%	56.8%	62.9%	69.4%	76.7%	68.8%
% Ausentismo	15%	40%	30%	14%	14%	23%
% Completitud	95%	96%	93%	86%	93%	93%
Por Contratar	3.0	2.0	3.7	7.9	4.0	4.1
Plantilla Teorica	55	55	55	55	55	55
Temporales	0	0	0	0	0	0
Plantilla Actual	52.00	53.00	51.29	47.14	51.00	50.89
Libres	98	100	98	90	96	482
Vacaciones	1.00	0.57	2.00	2.00	2.86	1.69
Reposos	0	0	0	0	0	0
Permisos	0	0	0	0	0	0
Ausentes	12.43	16.57	13.43	7.57	9.86	11.97
Asistentes	24.57	22.14	22.57	24.86	24.57	23.74
Horas Reales	1,752.00	1,276.00	1,374.00	1,559.00	1,651.00	7,612.00
Horas Teoricas Plantilla Activa	2,072.00	2,136.00	1,976.00	1,808.00	1,928.00	9,920.00
Horas Teoricas Plantilla Teoricas	2,240.00	2,248.00	2,184.00	2,248.00	2,152.00	11,072.00

Asistencia Centro de Distribución

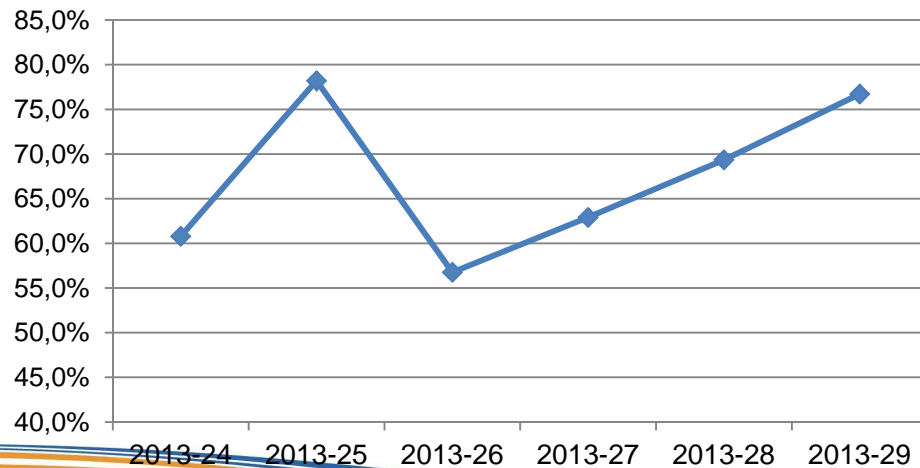
Ausentismo



Completitud



Productividad



Semana	Ausentismo	Completitud	Productividad
2013-24	31.9%	92.2%	60.8%
2013-25	15.4%	94.5%	78.2%
2013-26	40.3%	96.4%	56.8%
2013-27	30.5%	93.2%	62.9%
2013-28	13.8%	85.7%	69.4%
2013-29	14.4%	92.7%	76.7%